

## PREAMBLE

This BCS Athlete Sponsorship Properties Policy, as referred to in the Athlete Agreement, outlines the properties allocated by BCS to BCS Athletes for personal sponsorship logos.

## NOTES:

- This document is not intended to restrict IBSF or BCS properties. Any placement of BCS or IBSF logos as well as the clothing, equipment or design may change from time to time.
- The scale and dimensions of the properties are indicated by the written area/dimensions. The athlete can utilize the area of the properties and are not limited by number of sponsorship logos.
- It is the athlete's responsibility to ensure that they conform with the specifications set out in this BCS Athlete Sponsorship Properties document.
- Any exceptions to this Policy must be approved in writing by BCS management.

## WHAT TO WEAR WHEN & WHERE:

- During Competitions:

Top of the track:

- Speedsuit;
- Winter Jacket or Podium Jacket;
- Winter Pant or Podium Pant; and
- Winter Toque  
(optional – athlete supplied headwear with Karbon logo affixed (6.5cm W x 1cm H)).

Bottom of the track: (including leader's box)

- Speedsuit;
- Winter Jacket or Podium Jacket;
- Podium Pant or Winter Pant; and
- Podium Toque  
(optional – athlete supplied headwear with Karbon logo affixed (6.5cm W x 1cm H)).

Awards & Medals Ceremonies:

- Podium Jacket;
- Podium Pant; and
- Podium Toque  
(optional – athlete supplied headwear with Karbon logo affixed (6.5cm W x 1cm H)).

- Travel Days:

– Team Jacket or Podium Jacket.

- BCS activities or BCS arranged activities, including but not limited to on-ice training, official team events, media or sponsor appearances, promotional activities etc.:

- Winter Jacket or Podium Jacket;
- Podium Pant or Winter Pant (weather depending, or pants with no visible branding); and
- Podium or Winter Toque  
(optional – athlete supplied headwear with Karbon logo affixed (6.5cm W x 1cm H))

## WINTER OUTERWEAR

### JACKET FRONT HEAD

max width: 50 mm  
max height: 35 mm

### CHEST

max width: 80 mm  
max height: 150mm

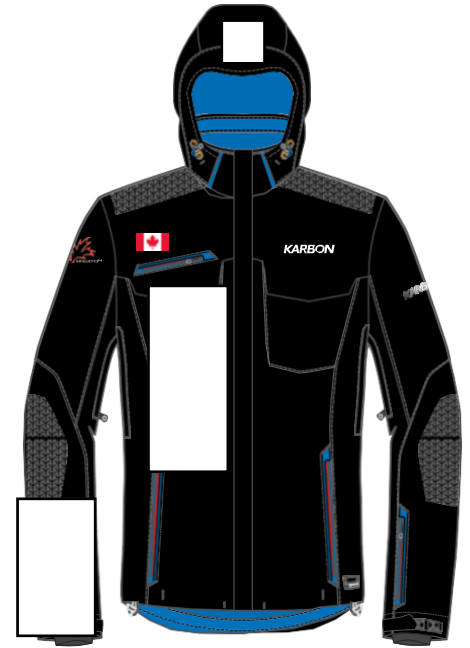
### ARM

max width: 48 mm max  
height: 105mm

**COLOUR: WHITE**



JACKET BACK



JACKET FRONT

### JACKET BACK

max width: 200 mm  
height: 240 mm

**COLOUR: WHITE**

### PANT BACK

max width: 60 mm  
max height: 300 mm

**COLOUR: WHITE**

### TOQUE

max width: 50mm max  
height: 35 mm

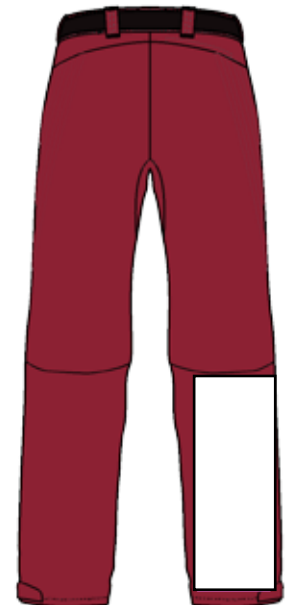
**COLOUR: WHITE**



TOQUE



PANT FRONT



PANT BACK

## COMPETITION WEAR SPEEDSUIT

### SPEEDSUIT FRONT

#### RIGHT CHEST

max width: 48 mm  
max height: 105mm

#### RIGHT THIGH

max width: 48 mm  
max height: 105mm

#### RIGHT SHIN

max width: 48 mm  
max height: 105mm

#### LEFT ARM/ HAND:

max width: 48 mm  
max height: 105mm

#### NECK

Max width: 45mm  
Max height: 45mm

**COLOUR:** *WHITE*

### SPEEDSUIT BACK

**HORIZONTAL BACK:**  
max width: 105 mm  
max height: 48mm

#### LEFT HIP:

max width: 50 mm  
max height: 35 mm

#### LEFT Thigh

max width: 48 mm  
max height: 105mm

#### LEFT CALF

max width: 48 mm  
max height: 105mm

#### NECK

Max width: 45mm  
Max height: 45mm

**COLOUR:** *WHITE*



SPEEDSUIT FRONT

SPEEDSUIT BACK

## COMPETITION EQUIPMENT SKELETON SLED

### SKELETON SLED TOP SIDE

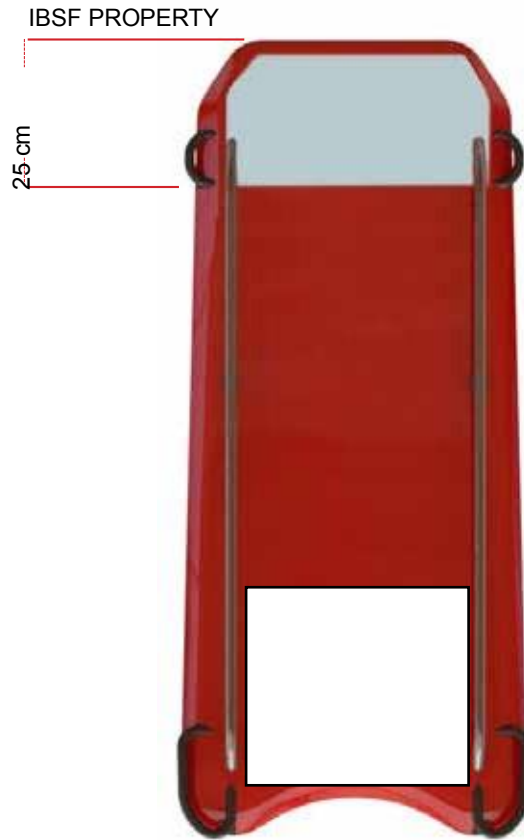
max width: 255 mm max  
height: 210 mm

**COLOUR: UNLIMITED**

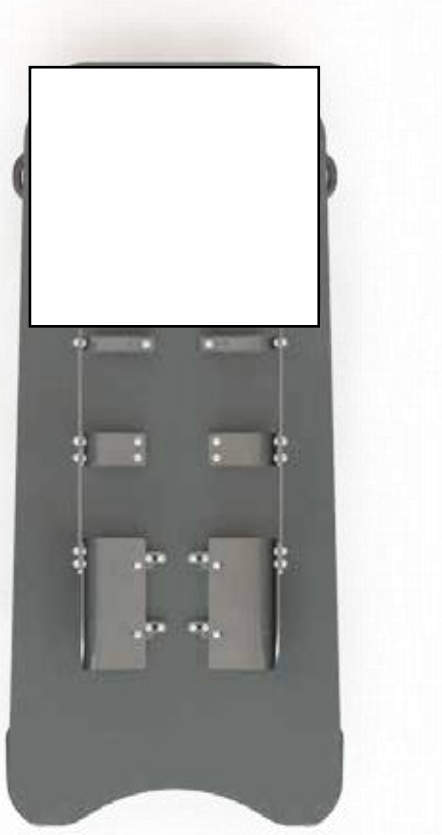
### SKELETON SLED BOTTOM SIDE

max width: 340 mm  
max height: 200 mm

**COLOUR: UNLIMITED**



SKELETON SLED BOTTOM SIDE



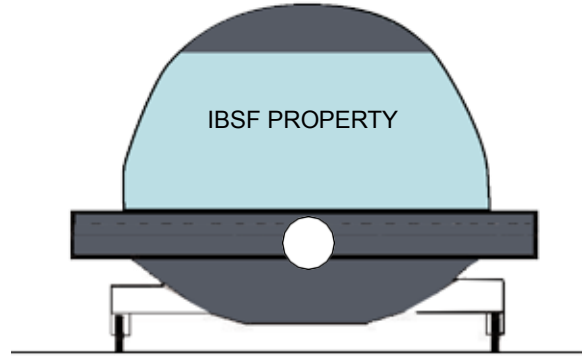
SKELETON SLED TOP SIDE

## COMPETITION EQUIPMENT BOBSLED

### BOBSLED FRONT

max width: 112 mm  
max height: 50 mm

**COLOUR:** *UNLIMITED*



BOBSLED FRONT

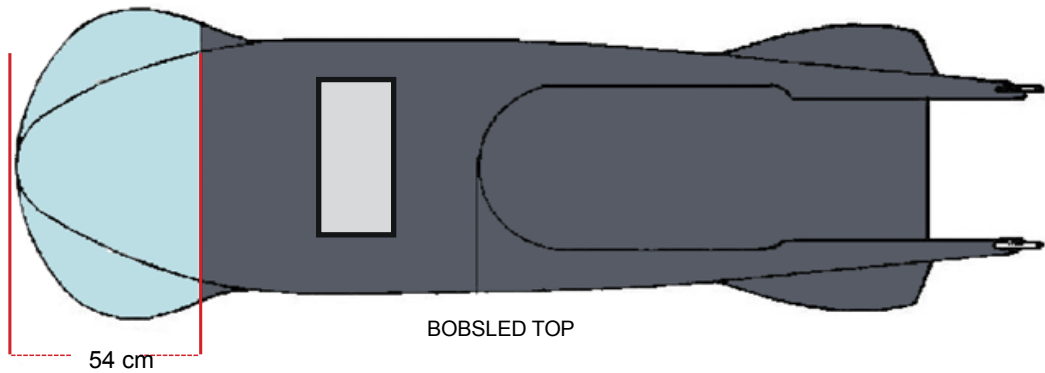
### BOBSLED TOP

max width: 300 mm  
max height: 150 mm

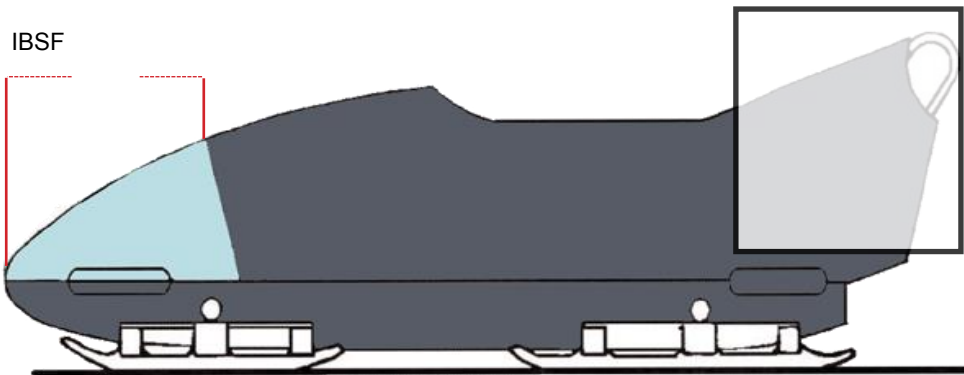
### BOBSLED SIDE (LEFT & RIGHT)

Area may vary: Measured horizontally from the front edge of the rear bunk to the back of each sled

**COLOUR:** *UNLIMITED*



BOBSLED TOP



BOBSLED SIDES (LEFT & RIGHT)

## COMPETITION EQUIPMENT HELMET - BOBSLEIGH & SKELETON

### HELMET FRONT

CHIN x 1: 1247 mm<sup>2</sup>  
max width: 43 mm  
max height: 29 mm

**COLOUR: BLACK OR WHITE**

### HELMET BACK

BACK x 1: 2035 mm<sup>2</sup>  
max width: 80 mm  
max height: 37 mm

**COLOUR: BLACK OR WHITE**

Skeleton athletes are permitted full customization of their helmets, provided all designs and modifications comply with current International Bobsleigh & Skeleton Federation (IBSF) regulations and standards.



HELMET FRONT



HELMET BACK



HELMET SIDE